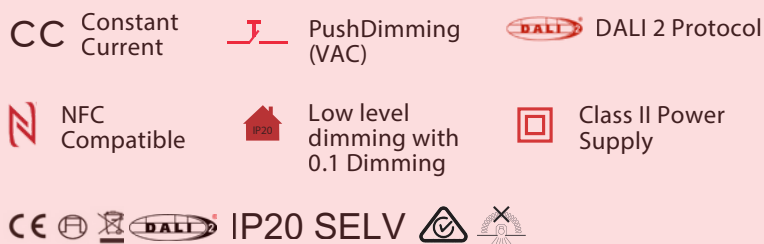


10W - SRP-2305N-10CC100-500

Compact Constant Current LED Driver with DALI-2 NFC

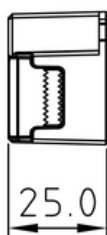
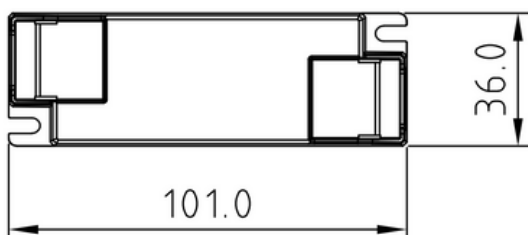
5-YEAR
WARRANTY



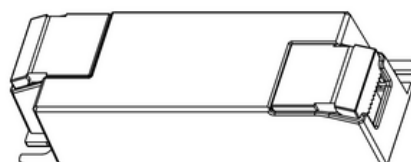
Specifications

Model		SRP-2305N-10CC100-500
Output	DC Voltage Range	3 ~ 42V
	Rated Current	100-500mA via NFC setting; Min.current gear lower to 0.1mA
	Current Accuracy	±3% (±1% @ Certain full load) @ full load
	Rated power	10W
Input	Voltage Range	220-240VAC
	Frequency range	50/60Hz
	Power Factor (Typ.)	> 0.94 @ 230VAC Full load
	Total Harmonic Distortion	THD ≤ 15% (@ full load / 230VAC)
	Efficiency (Typ.)	80% @ 230VAC full load
	AC Current (Max)	0.1A @ 230VAC
	Inrush Current (Typ.)	Max. 4.32A at 230VAC; 80μs duration
	Leakage current	< 5mA/230VAC
	Standby Power Consumption	< 0.5W
Control	Anti Surge	L-N: 2KV
	Dimming Interface	DALI Device Type 6 (DALI consumption < 2mA) / AC Push
	Dimming Range	0.01%-100% @ Max current
	Dimming Method	Amplitude/CCR dimming
Protection	Dimming Curve	Linear/ Logarithmic optional
	Short Circuit	Yes, recovers automatically after fault condition is removed
	Over Current	Yes, recovers automatically after fault condition is removed
	Over Temperature	Yes, recovers automatically after temperature drop
Environment	Working TEMP.	-25°C ~ +45°C
	Max. Case Temp	TC=85°C (Ta="45°C")
	Working humidity	10%-95% RH (non-condensing)
	Storage TEMP humidity	40°C ~ +80°C, 10% ~ 95% RH
Safety & EMC	Safety standards	EN61347-1, EN61347-2-13
	Withstand voltage	I/P-O/P: 3.75KVAC
	Isolation resistance	I/P-O/P: 100MΩ/500VDC/25°C/70% RH
	EMC Emissions	EN55015, EN61000-3-2, EN61000-3-3
Others	EMC Immunity	EN61547, EN61000-4-2, 3, 4, 5, 6, 8, 11
	Size	101*36*25 mm (L*W*H)
	Weight	0.15kgs
	Warranty	5 Years
Notes		1. DO NOT install with power applied to the device. 2. DO NOT expose the device to moisture.

Mechanical Specifications

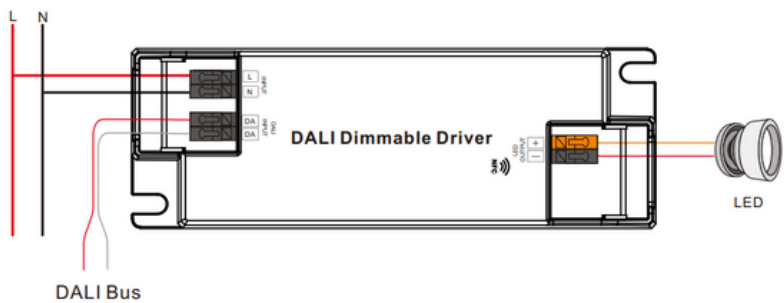


- Input Voltage Terminal: 2 pole terminal (same as the diagram)
- DALI or PUSH Dim Terminals: 2 pole terminals
- Output LEDs: 2 pole terminal block: Positive (+), Negative (-)

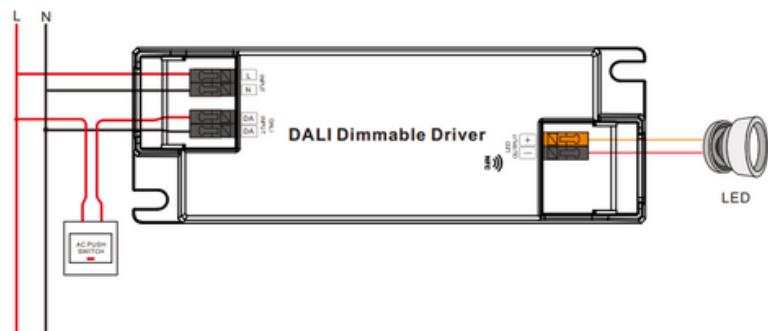


Wiring Diagrams and Dimming

DALI



Push Dimming



Operation

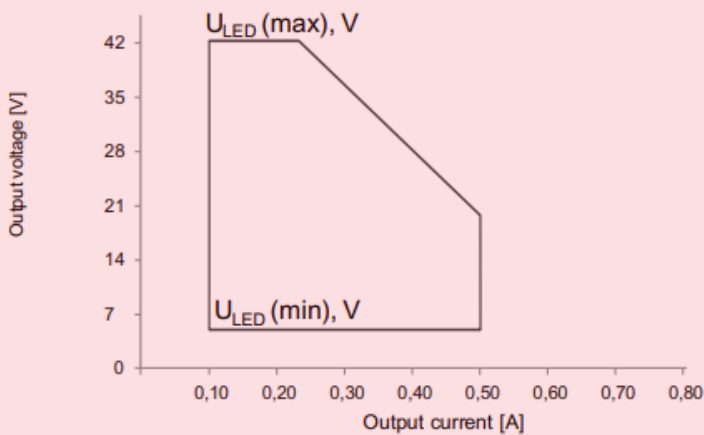
With DALI Master:

- DALI Address - 1 DALI address for 1 channel output is assigned by DALI Master controller automatically, please refer to user manuals of compatible DALI Masters for specific operations.

With NFC Programming Devices:

1. Follow the wiring diagram instructions and power on the DALI system
2. Turn off the DALI device before setting the parameters
3. Ensure that your device is equipped with NFC function, and is enabled for the setup

Operating Window

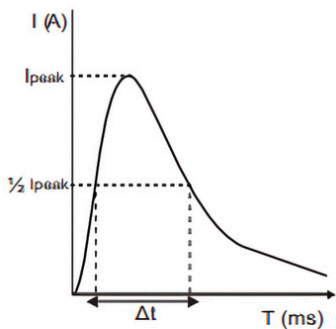


MCB Load Quality

Module Number	I _{peak}	T _{width}	Max.quantity of LED Driver per MCB														
			B10	B13	B16	B20	B25	C10	C13	C16	C20	C25	D10	D13	D16	D20	D25
SRP-2305N-10CC100-500	4.32A	80μs	34	45	55	69	86	57	75	920	115	144	80	104	128	160	200
SRP-2309N-10CCT100-500	4.32A	80μs	34	45	55	69	86	57	75	92	115	144	80	104	128	160	200

Note:

1. MCB parameters are based on ABB S200 series circuit breakers.
2. Different brands and models of miniature circuit breakers will affect the quantity of the drivers.
3. It's recommended to stay within the allowed quantity during on-site installation. Specific load quantity is subject to confirmation during installation.
4. If MCB temp. exceeds 30°C (or if multiple MCBs were installed side by side), reduce the number of mounted drives and recalculate your installation.
5. Type C MCB's are strongly recommended for LED lighting.



WWW.ADMTECH.COM.AU

ADM Systems Pty Ltd
sales@admtech.com.au
1300 236 467