

Technical Data

Input Characteristics

| Model No. | HMW34 |
|----------------|--------------------------|
| Mains voltage | 120~277VAC 50/60Hz |
| Stand-by power | <1W |
| Switched power | Max. 20pcs devices, 40mA |
| Warming-up | 20s |

Sensor Data

| Model No. | HMW34 |
|---------------------|----------------------------|
| Sensor principle | High Frequency (microwave) |
| Operation frequency | 5.8GHz +/- 75MHz |
| Transmission power | <0.2mW |
| Detection range | Max. (Ø x H) 10m x 1.5m |
| Detection angle | 360° |

Safety and EMC

| | |
|-----------------------|-------------------------------|
| EMC standard (EMC) | EN55015, EN61000 |
| Safety standard (LVD) | EN60669-1, EN60669-2-1 |
| Radio Equipment (RED) | EN300440, EN301489-1, EN62479 |
| Certification | Semko, CB, CE, EMC, RED, SAA |

Environment

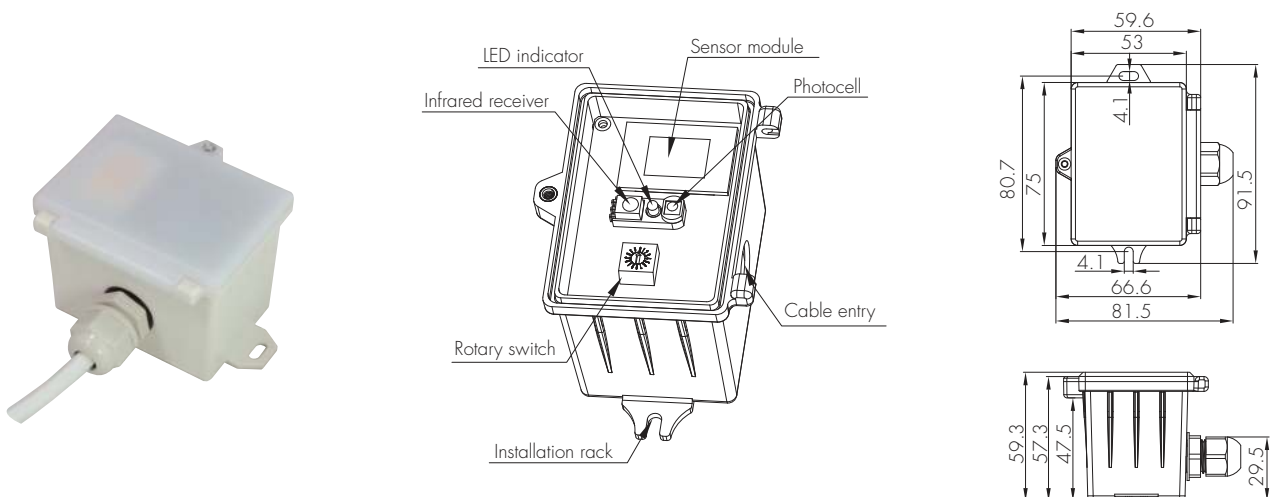
| | |
|-----------------------|-------------------|
| Operation temperature | Ta: -20°C ~ +70°C |
| IP rating | IP65 |

CE  RED  SAA CB IP65

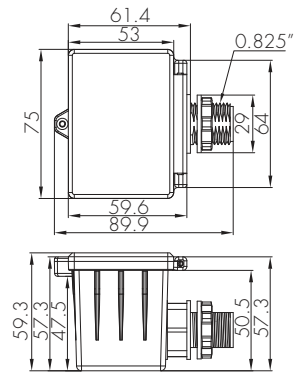
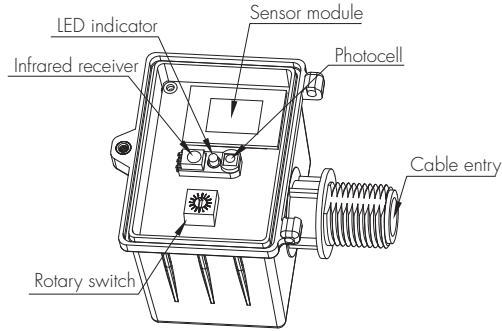
Mechanical Structures and Installations

For more details, please refer to user manual.

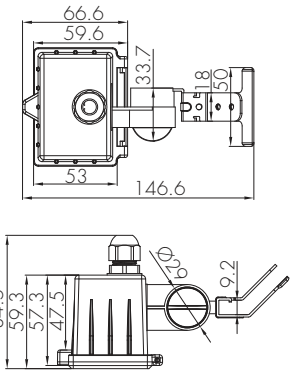
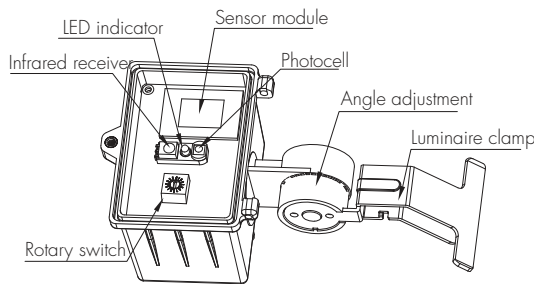
A. Ceiling mount



B. Screw to the Luminaire by conduit



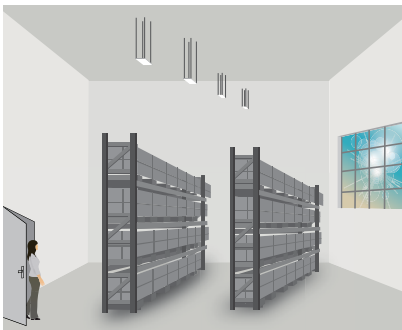
C. Attach to the shade by clamp



Functions and Features

1 Intelligent Photocell (daylight detection prior to motion detection)

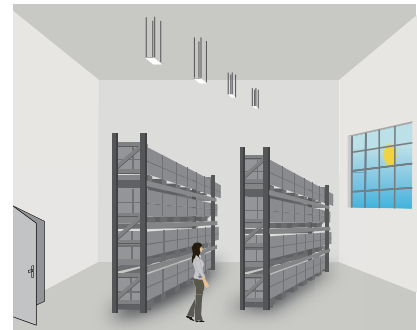
The built-in photocell will also automatically turn off the light when the ambient natural light exceeds the programmed lux level for more than 5min, regardless of whether motion is detected or not. This feature can be disabled if it is required that the fixture stays at dimmed level during absence.



With sufficient natural light, the light does not switch on when presence is detected.



With insufficient natural light, the sensor switches on the light automatically when presence is detected.



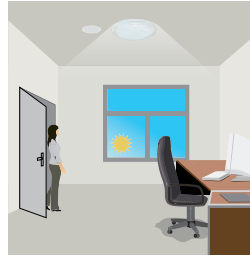
The sensor switches off the light when natural light is sufficient, even with presence.

Note: if the stand-by time is preset at "+∞", the fixture never switches off but stays at preset dimming level even when natural light is sufficient.

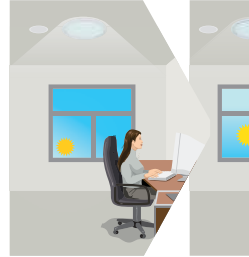
2 Daylight Harvest



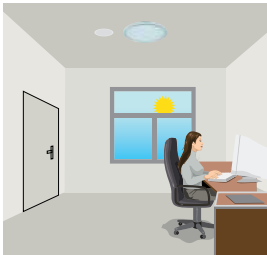
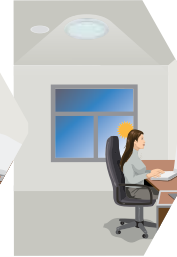
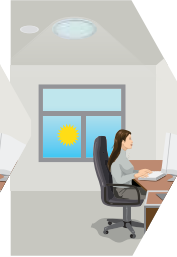
Light will not switch on when natural light is sufficient, even there is motion detected.



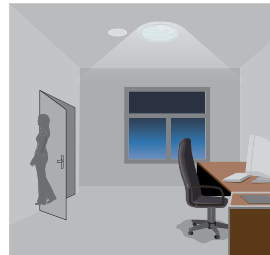
The light switches on automatically with presence when natural light is insufficient.



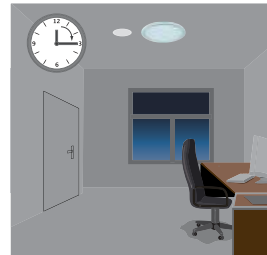
The light turns on at full or dims to maintain the lux level. The light output regulates according to the level of natural light available.



The light switches off when the ambient natural light is sufficient.



The light dims to stand-by period after hold-time and stays on selected minimum dimming level.



The light switches off completely after the stand-by period.

Note:

The Light automatically dims down and eventually turns off if the natural light lux level exceeds the daylight threshold. However, if the stand-by period is preset at "+∞", the fixture never switches off but dim to minimum level, even the natural light is sufficient.

Rotary Switch Preset

A rotary switch is built inside the sensor for scene selection / fast programming. Total 16 channels are available:



Rotary switch preset

Note: settings can also be changed by remote control HRC-11. The last action controls.

| Channel | Detection range | Hold-time | Daylight sensor | Stand-by time | Stand-by dim level |
|---------|-----------------|-----------|-----------------|---------------|--------------------|
| 0 | 100% | 5s | Disable | 10s | 10% |
| 1 | 100% | 1min | 50Lux | 5min | 10% |
| 2 | 100% | 5min | 50Lux | 10min | 10% |
| 3 | 100% | 5min | 75Lux | +∞ | 10% |
| 4 | 100% | 5min | 100Lux | +∞ | 10% |
| 5 | 100% | 5min | 200Lux | +∞ | 30% |
| 6 | 100% | 10min | 50Lux | 30min | 10% |
| 7 | 100% | 10min | 75Lux | +∞ | 10% |
| 8 | 100% | 10min | 100Lux | +∞ | 10% |
| 9 | 100% | 10min | 200Lux | +∞ | 30% |
| A | 100% | 20min | 100Lux | 1h | 10% |
| B | 100% | 20min | 200Lux | +∞ | 30% |
| C | 100% | 30min | 100Lux | +∞ | 10% |
| D | 100% | 30min | 200Lux | +∞ | 30% |
| E | 100% | 30min | 400Lux | +∞ | 50% |
| F | 100% | 5s | 100Lux | 10s | 10% |

Settings (Remote Control HRC-11)



Permanent ON/OFF function

Press button "ON/OFF" to select permanent ON or permanent OFF mode.
* Press button "AUTO", "RESET" to quit this mode.



Reset Settings

Press button "RESET", all settings go back to rotary switch settings.



Shift Button

Press button "Shift", the LED on the top left corner will flash to indicate mode selection. All values / settings in RED are valid for 20 seconds.



AUTO mode

Press button "AUTO" to initiate automatic mode. The sensor starts working and all settings remain as before the light is switched ON/OFF.

Note: "Semi-auto" function is disabled.



Power output

Press the buttons to select light output at 80% (at initial 10,000 hours) or 100%.

Note: "Sensor off" and "Twilight" functions are disabled.



Brightness +/-

Press the buttons to adjust the light brightness to reset the target lux level.



Scene program - 1-key commissioning

1. Press button "Start" to program.
2. Select the buttons in "Detection range", "Daylight threshold", "Hold-time", "Stand-by time", "Stand-by dimming level" to set all parameters.
3. Press button "Memory" to save all the settings programmed in the remote control.
4. Press button "Apply" to set the settings to each sensor unit(s).

For example, to set detection range 100%, daylight threshold Disable, hold-time 5min, stand-by time +∞, stand-by dimming level 30%, the steps should be: Press button "Start", button "100%", "Disable", "Shift", "5min", "Shift", "+∞", "30%", "Memory". By pointing to the sensor unit(s) and pressing "Apply", all settings are passed on the sensor(s).

Detection range

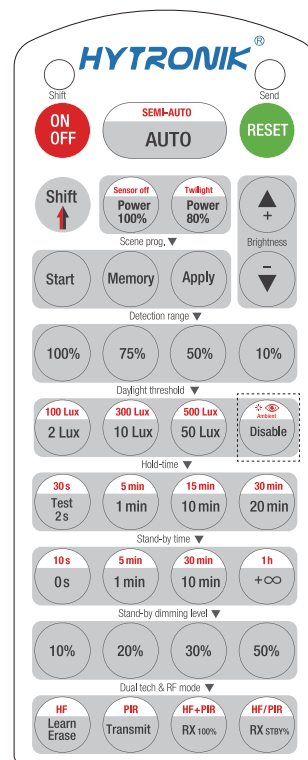
Press buttons in zone "Detection range" to set detection range at 100% / 75% / 50% / 10%.

Daylight threshold

Press buttons in zone "Daylight threshold" to set daylight sensor / target lux level at 50Lux / 100Lux / 300Lux / 500Lux / Disable.

Note: 2lux / 10lux are disabled.

To set daylight sensor at 100Lux / 300Lux / 500Lux, press "Shift" button first.



HRC-11

Load Indication:

The light will flash ONCE rapidly after receiving the command from the remote control successfully.

Ambient daylight threshold

1. Press button "Shift", the red LED starts to flash.
2. Press button "Ambient", the surrounding lux level is sampled and set as the new daylight threshold / target lux level.

Hold-time

Press buttons in zone "hold-time" to set the hold-time at 2s / 30s / 1min / 5min / 10min / 15min / 20min / 30min.

Note: 1. To set hold-time at 30s / 5min / 15min / 30min, press "Shift" button first.

2. 2s is for testing purpose only, stand-by period and daylight sensor settings are disabled in this mode.

*To exit from Test mode, press button "RESET" or any button in "Hold-time".

Stand-by time (corridor function)

Press buttons in zone "stand-by time" to set the stand-by period at 0s / 10s / 1min / 5min / 10min / 30min / 1h / +∞.

Note: "0s" means on/off control; "+∞" means bi-level control, the fixture is 100% on when there is motion detected, and remains at the stand-by dimming level when no presence after motion hold-time.

Stand-by dimming level

Press the button in zone "stand-by dimming level" to set the stand-by dimming level at 10% / 20% / 30% / 50%.

Dual tech & RF mode

All buttons are disabled.

