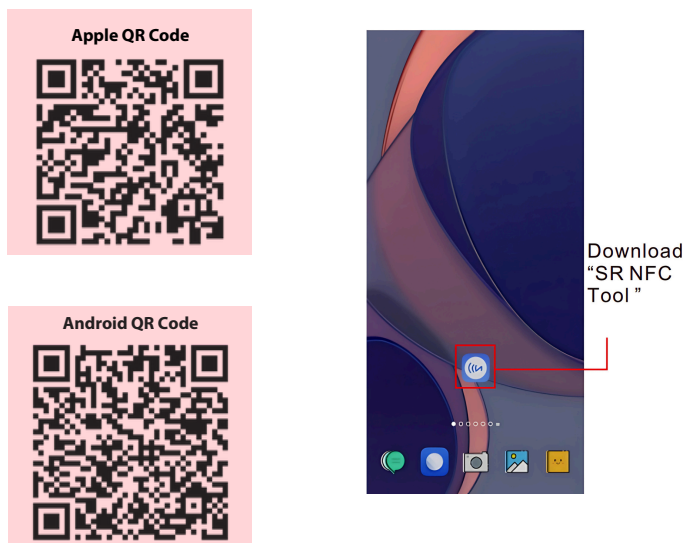


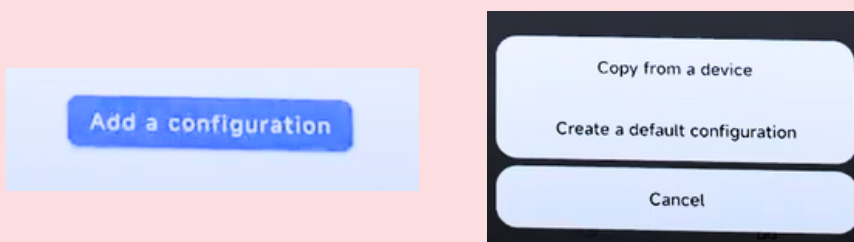


Sunricher SRP Series CC Current LED Driver with DALI-2 NFC NFC Configuration Instruction Manual

Step 1: Download the SR NFC Tool app from the App Store or Google Play Store using your smartphone or tablet.

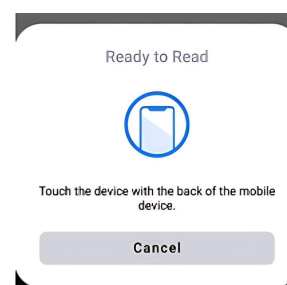
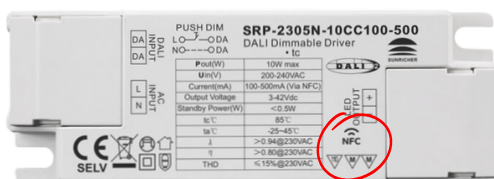


Step 2: Launch the SR NFC Tool, tap on "Add a configuration," then select "Copy from a device."

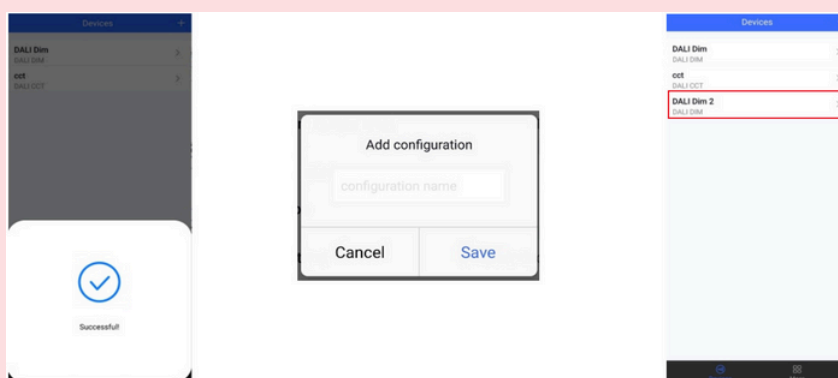


Step 3: Locate the NFC logo on the LED driver and place your phone near it.

Ensure that the LED driver is powered off before beginning the process.



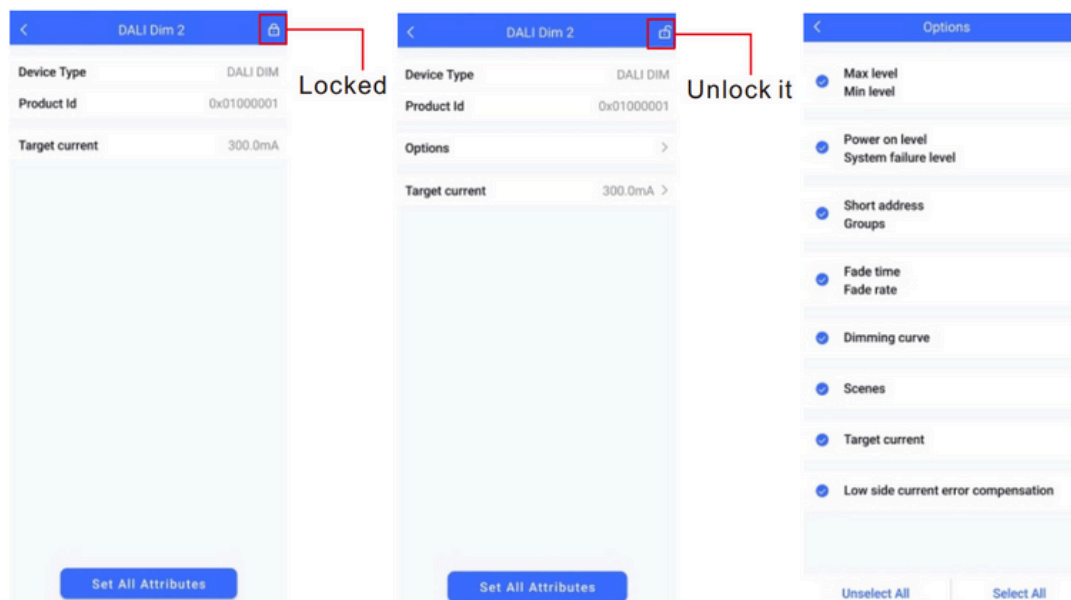
Step 4: Once the driver details appear on your app, assign a filename, and save the LED driver's name (e.g., product or model name so you can easily identify it in the future).



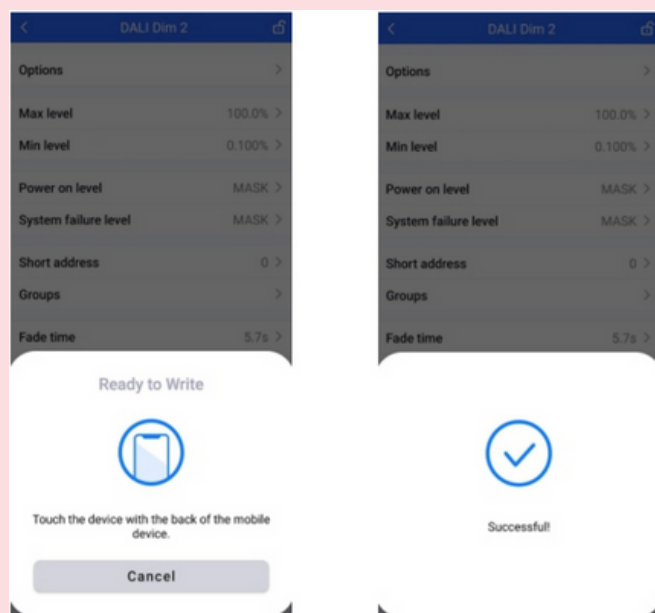
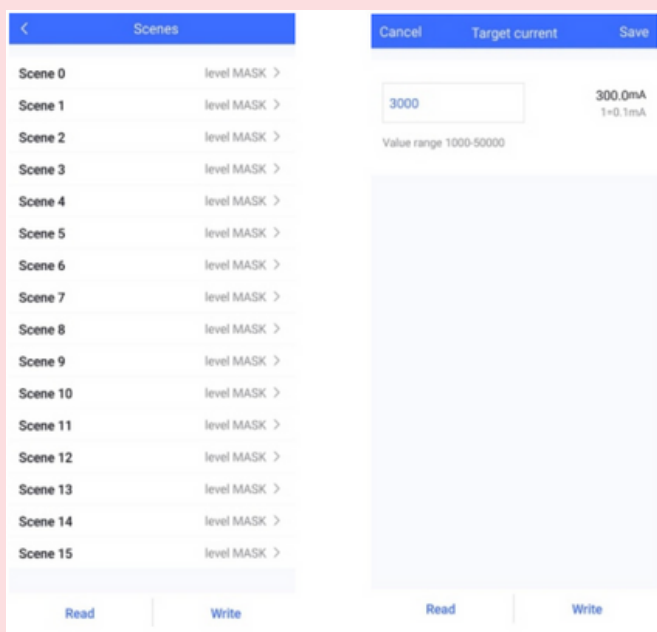


Sunricher SRP Series CC Current LED Driver with DALI-2 NFC NFC Configuration Instruction Manual

Step 5: Tap on the product you just added to the app to open its configuration. In the top right corner, tap "Unlock," then go to "Options" to configure your desired settings.



Step 6: Once you're happy with your settings, tap "Set All Attributes" to save the changes. A prompt will appear asking you to write the settings to the LED driver. Place your phone close to the NFC logo again to transfer the settings.



Follow the same steps if you wish to configure other Sunricher NFC-enabled LED driver and/or if you want to create another setting.

Contact ADM if you require assistance on 1300 236 467 or email us at sales@admtech.com.au.

